

# Sage PRO ERP 2011

## Product Update 1 - Readme Addendum to Documentation July 01, 2011



These instructions supplement and clarify the program documentation for Sage Pro ERP version 2011, Build 3700.00, Product Update 1.

### Installation

Please consult with your Business Partner before installing this Product Update. All updates must be installed to the appropriate Sage Pro ERP folder.

1. Copy the SagePro2011B3700\_00\_100\_SP1.exe or SagePro2011B3700\_00\_200\_SP1.exe file (depending on your Sage Pro ERP installation) into a temporary folder (for example, C:\temp).
2. Verify that all users are logged out of Sage Pro ERP and close the application.
3. Verify that you have made a complete backup of your Sage Pro ERP program folders, system data and company data before installing this Service Pack.
4. Navigate to the temporary folder selected in Step 1 and run the appropriate self-extracting zip file.
5. A dialog box appears. In the dialog, change the "Unzip to folder" to your Sage Pro ERP root directory (i.e. C:\Pro2011\).
8. Then click "Unzip". This will unzip all files and folders contained in the Product Update.

### **Important for customers upgrading from 7.5 or 2010**

Run P91677\_Update:

This update is to resolve an issue that occurs only when Pro 75 / Pro 2010 is upgraded to Pro 2011. If you directly installed Pro 2011 or upgraded from Pro versions earlier than Pro 75, you can skip this update process.

After upgrading from Pro 75 / Pro 2010 to Pro 2011, when launching a new import feature "Item Cost Level file" from PO | Cost Level Screen, it will display a message "Import option is not available for the currently selected company (xx)". This update "P91677\_Update" will resolve the error by adding specific records of new import option "Item Cost Level File" into SYHIMP and SYDIMP tables.



1. Start Sage Pro ERP 2011.
2. Log in as the Administrator.
3. Select File | Open | FoxPro Access.
4. Type "DO P91677\_Update" without the quotes and press Enter key.
5. A message box "Updates were completed successfully." should be returned.
6. Select "OK"
7. Press "ENTER" to return to the Sage Pro ERP 2011 application.

## New Features and Enhancements

### Accounts Receivable Reference field

For non- Accounts Receivable cash receipts the reference field is now included in the General Ledger posting and in the account drilldown. **Fixed files:** SYLKGL.PRG, GLRLIB.PRG

### Deposit Return/Reverse

New! The ability to provide a refund to customers who have given you a deposit against a sale. This refund can produce a check for the customer or apply the refund to a credit card with the Sage Exchange integrated credit card processing. **Fixed files:** ARAPPL.VCX, ARRCPT.VCX, ARVOID.VCX, ARBASE.VCX

PRO Refunds - Session 000243

Apply Post Credit Summary

Customer [ ] Contact [ ] Phone [ / - ]

Company [ ]  Refund Deposits Fax [ / - ]

General Notes

Address	Pay Method	Check/Ref	Pay Date	Amount Paid
[ ]	K	268	03/23/08	0.00

Apply to invoices and debit memos for

Customer  National Account

Bank Deposit # [ ] PO#Reference [ ]

GL Cash Account 11010-000-0000

System Checking Account [ ]

GL Credit Account 20015-000-0000

Customers Deposits [ ]

In the Refund screen, on selecting the customer, a new “Refund Deposits” check box will be enabled and user can check / uncheck based on the type of refund he is going to make.

If “Refund Deposits” option is selected, the GL Debit Account will be enabled and focus will be moved to Pay Method field.

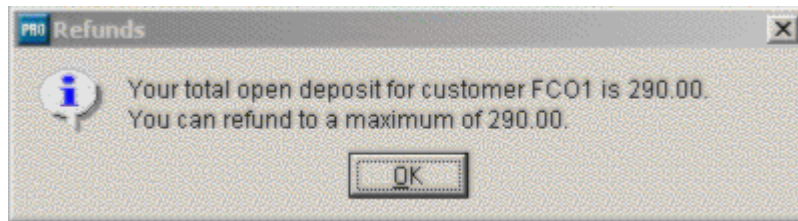
Default Pay Method is “K” (by check), user can change the Pay method “O” or “C”.

K – for refund the deposits by check.

O – for reverse the deposit amount without check or credit card (Like negative deposits through Deposits screen).

C – for refund the deposits by credit card

User can enter the refund amount in Amount Paid field. If refund amount is greater than the customer deposit amount, below dialog will be displayed.



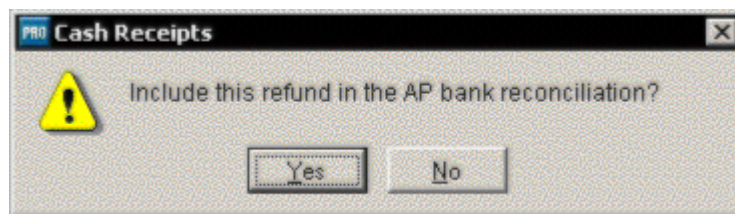
When clicking on the Save or Page Down key the Apply button will be enabled.

Pressing “Apply” button will list all the deposits where user can apply this refund amount with single or multiple deposits.

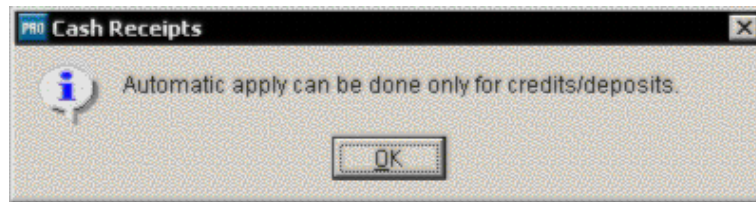
### **Bank Reconciliation** (Using the existing refunds functionality)

If Pay Method is “K”, the bank reconciliation will be set as “Yes”, it will not ask dialog from user.

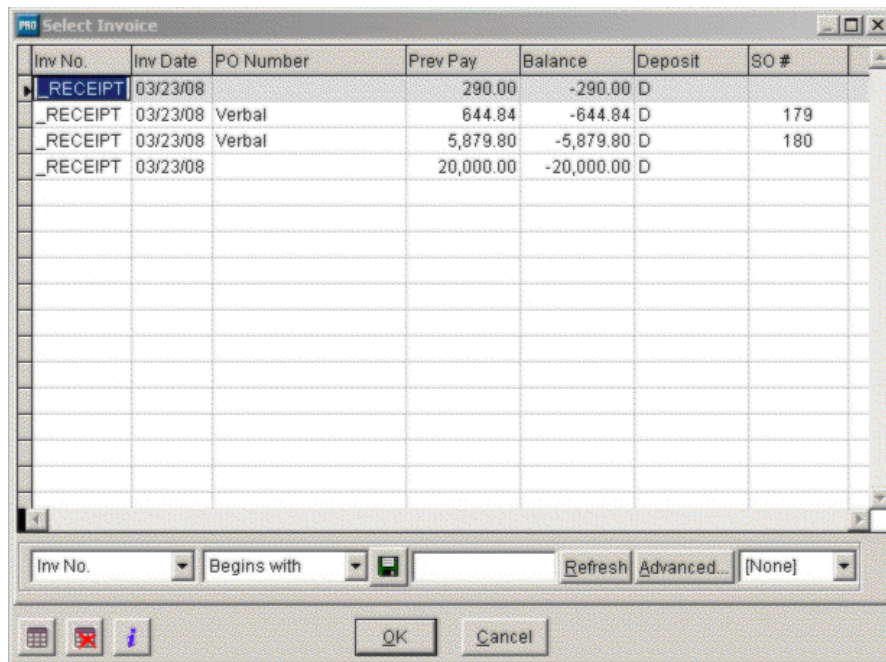
If Pay Method is other than “K”, system will be asked from user, and based on user selection it will affect bank reconciliation.



Apply screen will have the options “Automatic” and “Manual”. But the refund functionality does not support “Automatic” type. Selecting “Automatic” will display the below dialog.

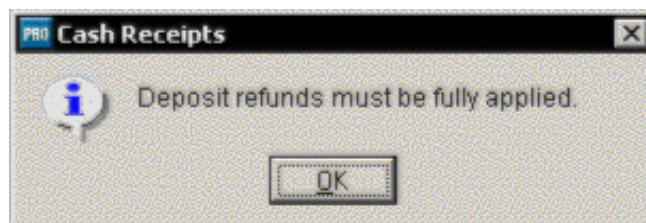


Users can select the Manual method for apply. It will launch the below screen for applying the refund amount.



Existing refund of payment will allow the users to apply the refund amount partially where the remaining amount will be posted as open credit.

But when the deposit is refunded, it will not support partial applying. Hence if user is not applying the refunds fully, he cannot save the transaction. It will be validated and below message will be displayed.





## Program fixes by module

- [Accounts Payable](#)
- [Sales Order](#)
- [Purchase Orders](#)
- [Accounts Receivable](#)
- [Work Orders](#)

## Product Update 1 Program fixes by PTR number

<a href="#">85629</a>	<a href="#">91447</a>	<a href="#">91638</a>	<a href="#">91659</a>
<a href="#">86170</a>	<a href="#">90868</a>	<a href="#">91639</a>	<a href="#">91677</a>
<a href="#">91486</a>	<a href="#">91656</a>	<a href="#">91646</a>	
<a href="#">91556</a>	<a href="#">91618</a>	<a href="#">91648</a>	

## Accounts Payable

**85629** – The 'Phase' and 'Category' fields of the Recurring Payables no longer revert back to default values while editing the Recurring Payable Entry. **Fixed files:** APPOSD.VCX, ARRECR.VCX

## Sales Order

**86170** – The order or line item status is now correctly refreshed after completing a shipment from Change/Void sales order **Fixed files:** SOPOST.VCX

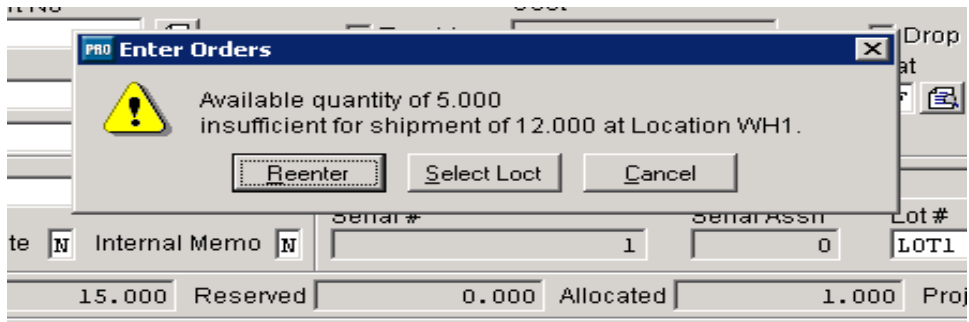
**91486** –An issue was resolved when entering in a lotted item in sales order which exists in more than one bin. Users will now be able to select all available quantities for a lotted item. **Fixed files:** SOPOST.VCX

## Further Instructions

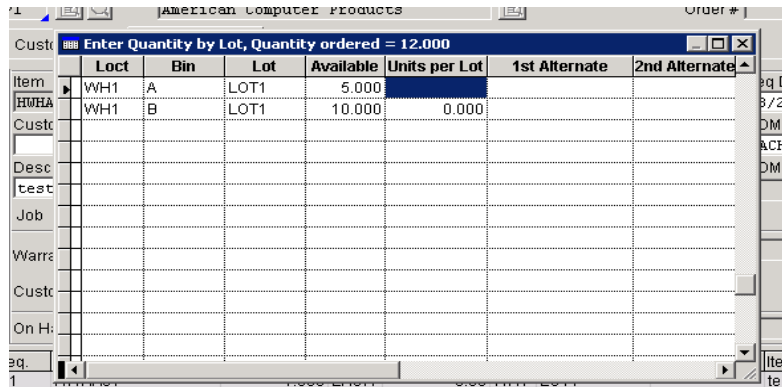
**Issue:** When you have total available qty shipment of 15 from different Lots, and when you enter a Sales Order for 12 qty, Sage Pro is displaying incorrect message and doesn't allow user to continue.



For example, you have 5 qty for Item A in Lot1, Bin 1, and 10 qty for Item A in Lot1, Bin 2 total of 15 qty. If you order for a qty of 12 from Lot A for Item A, Sage Pro is displaying “Available quantity of 5.000 insufficient for shipment of 12.000 at Location WH1.” when you enter the Lot1 from Lot # field.



New fix will allow user to select allocation from different bins for order qty of 12 for Item A which will mimic the behavior when you click the Save button w/o entering the Lot information.



**90868** – A sales order return will allow for a new tax rate upon return as rates may have changed since the original sale . This fix will be applicable for Tax Table and Calculated Tax Methods only.

**Fixed files:** SOPOST.VCX, SOSHPP.PRG, SOBASE.VCX

**91656** – When autonumbering is turned off and the next suggested bid number is higher than the order being saved an issue with the order not being saved or printed has been corrected

**Fixed files:** SOPOST.VCX

**91638**– Fixed an issue where the ship to file, ARADDR does not always get populated with the customer number. **Fixed files:** SOSHPP.PRG, ARINSO.VCX

**91639** – Fixed an issue where records with a blank customer number were being deleted when a purge was run, regardless of what the purge dates were set for **Fixed files:** SOSHPP.PRG, ARINSO.VCX



**91646** – When printing batch orders an error was fixed which resulted in a 1705 and crash when two users printed at the same time. **Fixed files:** POPSTM.PRG, ARPSTM.PRG, SOPSTM.PRG, POBSTM.PRG

**91648** – Improved performance where printing a batch of Bill of Lading could take up to 30 minutes to complete. **Fixed files:** WMPSTM.PRG,WMBLPF.FRX,WMBLSF.FRX

## Purchase Orders

**91556** – When performing a Purchase Order return where the return quantity will result in a negative account in one location, you will now be able to process the return without errors.

**Fixed files:** PORECP.VCX

**91659** – When returning inventory a message appears: "Return value of item ART.STD.BK is greater than the current inventory on hand value. Returning this item will result in a negative on hand value.

**Fixed files:** PORECP.VCX

**91677** - After upgrading to Pro 2011 from earlier versions of Pro, the following message appears when trying to import vendor price lists: "Import option is not available for the currently selected company (xx)". Details are available under the section "**Important for customers upgrading from 7.5 or 2010**" above.

## Accounts Receivable

**91447** – Fixed an issue where if a customer has a zero amount in the Payment Discount Net Due and Net Due fields, after saving information the focus will remain on the last field edited rather than default back to the Sales tab. **Fixed files:** SYCICTRL.VCX

## Work Orders

**91618** – After editing a WO header and changing the required date the line item order changes. It will also affect the order of operations in a route in Shop Control. **Fixed files:** PE.PRG

◆  
**Sage** | 6561 Irvine Center Drive | Irvine, CA 92618 | 888-760-0947  
[www.SageNorthAmerica.com](http://www.SageNorthAmerica.com) | [www.SageProERP.com](http://www.SageProERP.com)